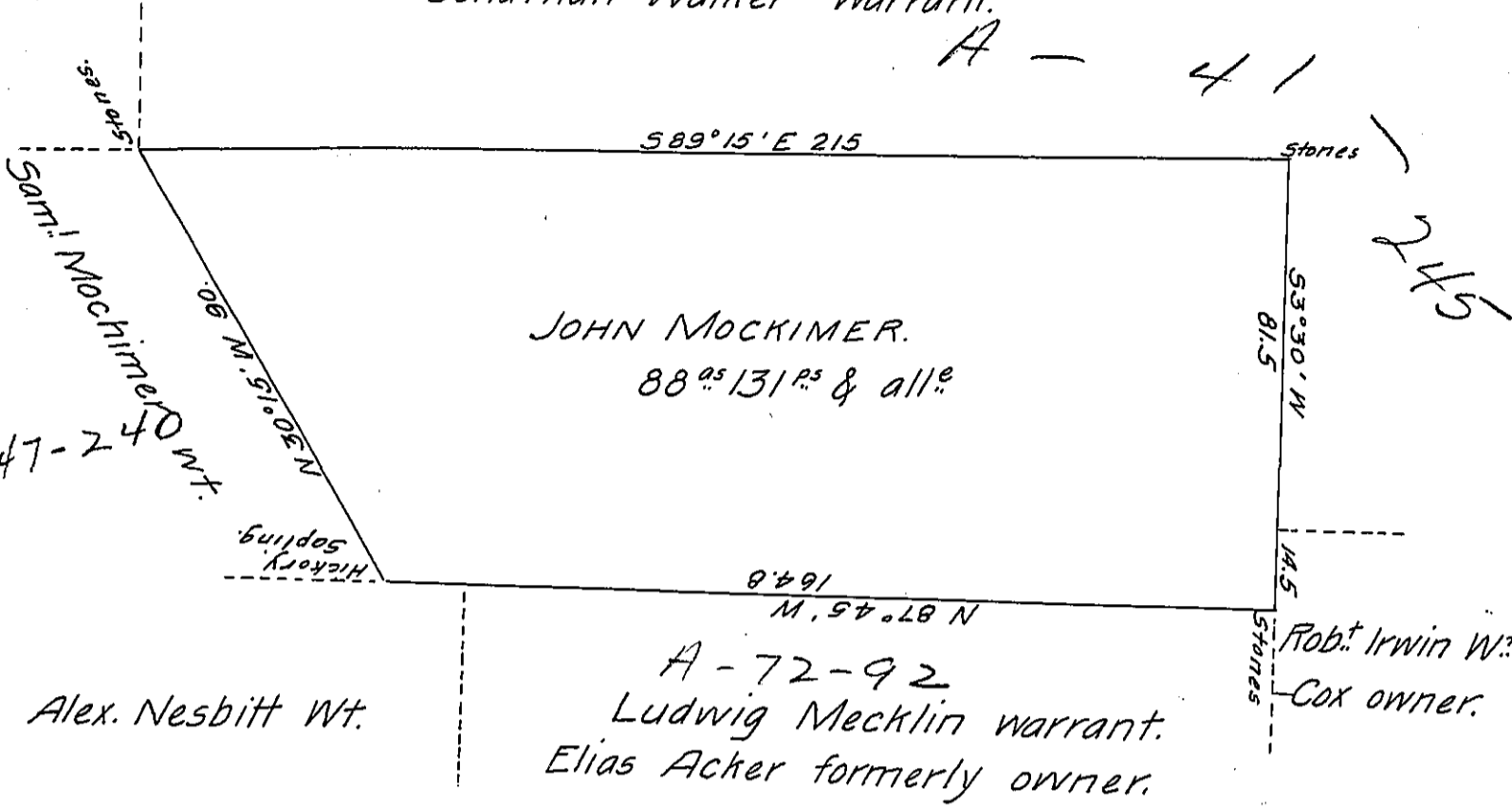


Jonathan Walker warrant.

A - 41



Draft of a tract of land, unimproved, situate in Butler (formerly Sugarloaf) township Luzerne County, containing Eighty Eight acres and one hundred and thirty one perches and allowance of six per cent &c.

Surveyed the above land to John Mockimer November 28<sup>th</sup> 1866, in pursuance of his warrant dated October 6<sup>th</sup> A.D. 1838.

John Sturdevant

Surveyer for Luzerne County.

Hon J. M. Campbell }  
S.G.

IN TESTIMONY that the above is a copy of the original remaining on file in the Department of Internal Affairs of Pennsylvania, made conformably to an Act of Assembly approved the 16th day of February, 1833, I have hereunto set my Hand and caused the Seal of said Department to be affixed at Harrisburg, this thirtieth day of April 1906.

20  
*Loac P. Brown*  
Secretary of Internal Affairs.